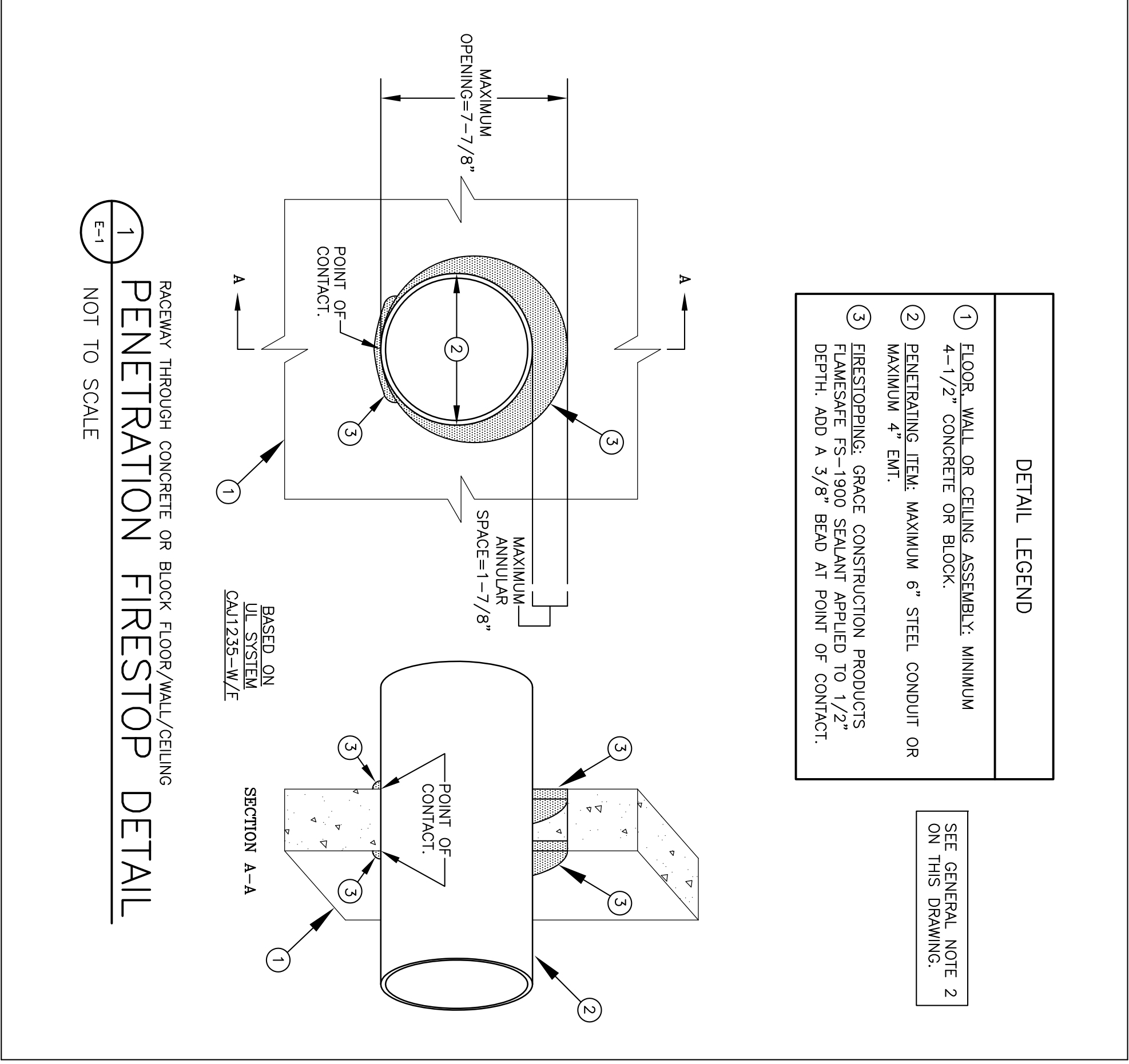


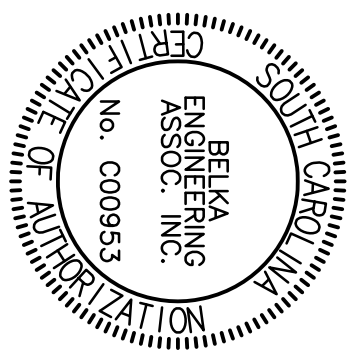
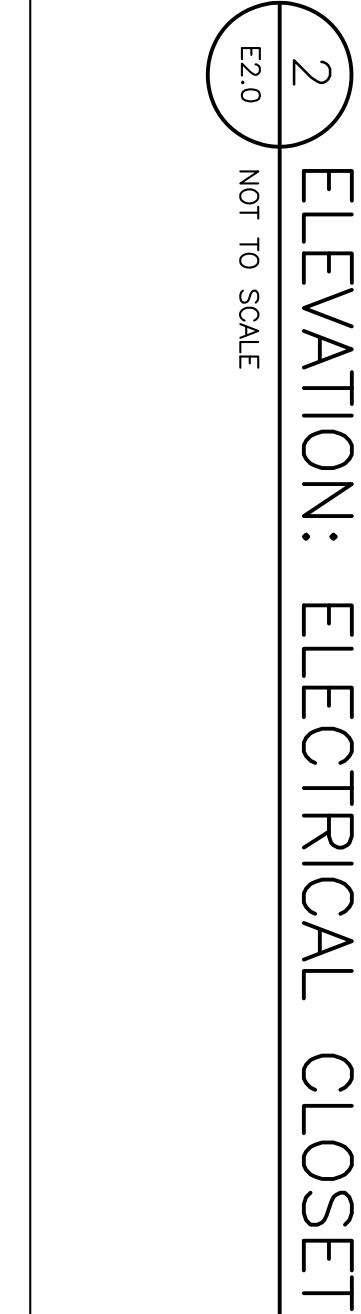
ELECTRICAL DRAWING INDEX	
E1.0	SYMBOL LEGEND, GENERAL NOTES, AND DETAILS
E2.0	SECOND FLOOR (PARTIAL) RENOVATION PLAN
E3.0	ELEVATION: EXISTING FVCC EQUIPMENT IN LOBBY
E3.1	ELEVATION: EXISTING FVCC EQUIPMENT IN LOBBY
E-1	ELECTRICAL LEGEND AND FIRE DETECTION ZONE SCHEDULE
E-2	FIRE DETECTION AND ALARM SYSTEM RISER DIAGRAM
E-3	FIRST FLOOR PLAN
E-4	SECOND FLOOR PLAN
E-5	THIRD FLOOR PLAN
E-6	TYPICAL PLAN: FOURTH THRU NINTH FLOORS
E-7	ROOF/PENTHOUSE PLAN

NEW RENOVATION PLANS

COPY OF OLD (1994) FIRE ALARM SYSTEM INSTALLATION DRAWINGS. DRAWINGS ARE INCLUDED FOR REFERENCE ONLY.



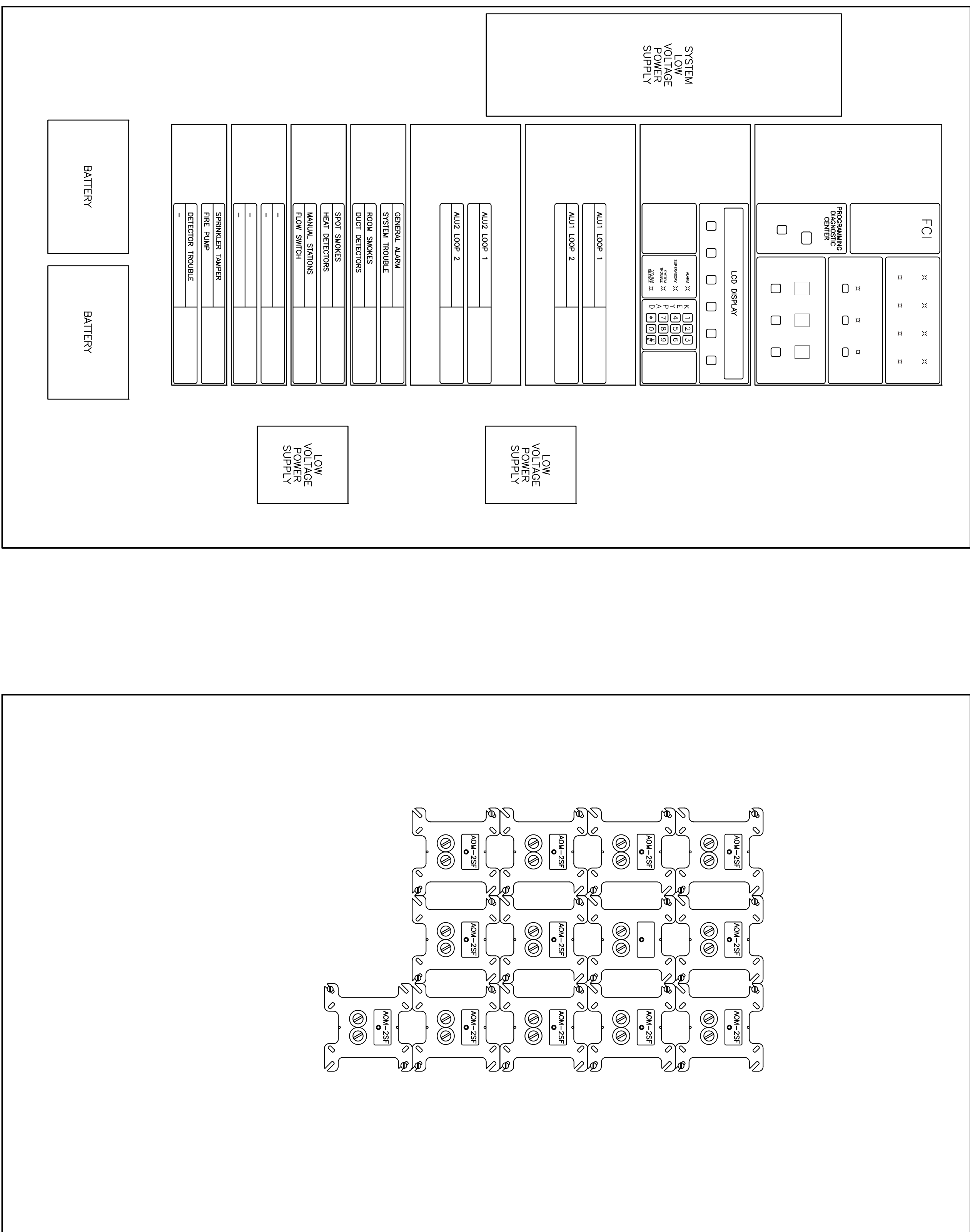




BUILDING: 165		DRAWING: CP00236618		DATE: 31JUL09	DRAWN BY: JWL		CHECKED BY: JWL	
REV.	DESCRIPTION				DATE	ORIG. BY	DRAWN BY	



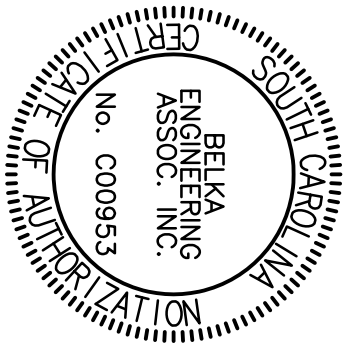
EXISTING FCI #7200 FIRE AND VOICE COMMAND CENTER (FVCC) PANEL



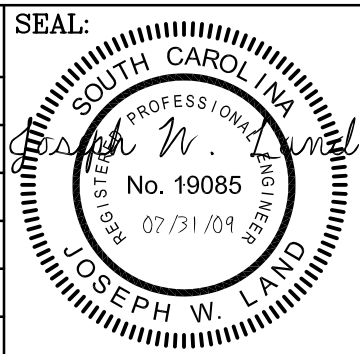
FLUSH CABINET #4 (1st LAYER)  
WITH HINGED BACKPLANE.  
(REPLACE)

FLUSH CABINET #4 (2nd LAYER).  
DEVICES SHOWN ARE LOCATED  
BEHIND MAIN CONTROL BOARDS.  
(REPLACE)

1	ELEVATION OF EXISTING FIRE ALARM EQUIPMENT
E3.1	NOT TO SCALE



CAMPUS PLANNING  
AND CONSTRUCTION  
COLUMBIA, SC 29208



BUILDING: 165	DRAWING: CP00236618	DATE: 31JUL09	DRAWN BY: JWL	CHECKED BY: JWL		
REV.	DESCRIPTION			DATE	ORIG. BY	DRAWN BY

University of South Carolina

**BCA** BELKA  
ENGINEERING  
ASSOCIATES, INC. US22

7 CLUSTERS CT. SUITE 201  
COLUMBIA, SOUTH CAROLINA 29210  
(803) 731-0650 fax (803) 731-2580  
EMAIL: jwland@belsouth.net

1.3.E

4 OF 1



FIRE DETECTION ZONE SCHEDULE

SEE "RELAY MAPPING SCHEDULE"  
ON SHEET E-2 (TYPICAL).

ZONE	ZONE/ANNUNCIATOR NOMENCLATURE	RELAY	ZONE	ZONE/ANNUNCIATOR NOMENCLATURE	RELAY	ZONE	ZONE/ANNUNCIATOR NOMENCLATURE	RELAY	ZONE	ZONE/ANNUNCIATOR NOMENCLATURE	RELAY
1	FIRE PUMP – MOTOR RUNNING	10	101	3rd FLR. MECH. RM #3 – SMOKE DETECTOR	5	201	6th FLR. MECH. RM #8 – SMOKE DETECTOR	5	301	9th FLR. MECH. RM #13 – SMOKE DETECTOR	5
2	FIRE PUMP – LOSS OF LINE POWER	10	102	APARTMENT 303 – SMOKE DETECTOR	3	202	APARTMENT 308 – SMOKE DETECTOR	3	302	APARTMENT 913 – SMOKE DETECTOR	3
3	FIRE PUMP – POWER PHASE REVERSAL	10	103	3rd FLR. MECH. RM #4 – SMOKE DETECTOR	5	203	6th FLR. MECH. RM #9 – SMOKE DETECTOR	5	303	9th FLR. ELECTRICAL ROOM – SMOKE DETECTOR	5
4	MAN SPRINKLER RISER – FLOW SWITCH	8	104	APARTMENT 304 – SMOKE DETECTOR	3	204	APARTMENT 609 – SMOKE DETECTOR	3	304	9th FLOOR EAST CORRIDOR – SMOKE DETECTOR	7
5	MAN SPRINKLER RISER – TAMPER SWITCH	9	105	3rd FLR. MECH. RM #5 – SMOKE DETECTOR	5	205	6th FLR. MECH. RM #10 – SMOKE DETECTOR	5	305	9th FLOOR WEST CORRIDOR – SMOKE DETECTOR	7
6	POST INDICATING VALVE – TAMPER SWITCH	9	106	APARTMENT 305 – SMOKE DETECTOR	3	206	APARTMENT 610 – SMOKE DETECTOR	3	306	9th FLR. ELEVATOR LOBBY – SMOKE DETECTOR	5
7	1st FLR. MAN SUPPLY AHU – DUCT DETECTOR	4	107	3rd FLR. MECH. RM #6 – SMOKE DETECTOR	5	207	6th FLR. MECH. RM #11 – SMOKE DETECTOR	5	307	ELEVATOR HOSTWAY CEILING – SMOKE DETECTOR	5
8	1st FLR. MAN SUPPLY AHU – DUCT DETECTOR	4	108	APARTMENT 306 – SMOKE DETECTOR	3	208	APARTMENT 611 – SMOKE DETECTOR	3	308	MECHANICAL CHASE CEILING – SMOKE DETECTOR	5
9	1st FLR. MAN SUPPLY AHU – DUCT DETECTOR	4	109	3rd FLR. MECH. RM #7 – SMOKE DETECTOR	5	209	6th FLR. MECH. RM #12 – SMOKE DETECTOR	5	309	ROOF LEVEL – PULL STATION	7
10	1st FLR. LAUNDRY ROOM AHU – DUCT DETECTOR	4	110	APARTMENT 307 – SMOKE DETECTOR	3	210	APARTMENT 612 – SMOKE DETECTOR	3	310	ROOF LEVEL – PULL STATION	7
11	1st FLR. LAUNDRY ROOM AHU – DUCT DETECTOR	4	111	3rd FLR. MECH. RM #8 – SMOKE DETECTOR	5	211	6th FLR. MECH. RM #13 – SMOKE DETECTOR	5	311	ELEVATOR PENHOUSE – PULL STATION	7
12	1st FLR. EQUIPMENT ROOM – SMOKE DETECTOR	5	112	APARTMENT 308 – SMOKE DETECTOR	3	212	APARTMENT 613 – SMOKE DETECTOR	3	312	ELEVATOR PENHOUSE – SMOKE DETECTOR	5
13	1st FLR. EQUIPMENT ROOM – SMOKE DETECTOR	5	113	3rd FLR. MECH. RM #9 – SMOKE DETECTOR	5	213	6th FLR. ELECTRICAL ROOM – SMOKE DETECTOR	5	313		
14	1st FLR. EQUIPMENT ROOM – SMOKE DETECTOR	5	114	APARTMENT 309 – SMOKE DETECTOR	3	214	6th FLOOR WEST CORRIDOR – PULL STATION	7	314		
15	1st FLR. EQUIPMENT ROOM – PULL STATION	7	115	3rd FLR. MECH. RM #10 – SMOKE DETECTOR	5	215	6th FLOOR EAST CORRIDOR – PULL STATION	7	315		
16	1st FLR. EQUIPMENT ROOM – SMOKE DETECTOR	5	116	APARTMENT 310 – SMOKE DETECTOR	3	216	6th FLR. ELEVATOR LOBBY – SMOKE DETECTOR	5	316		
17	1st FLR. EQUIPMENT ROOM – SMOKE DETECTOR	5	117	3rd FLR. MECH. RM #11 – SMOKE DETECTOR	5	217	7th FLR. MECH. RM #1 – SMOKE DETECTOR	5	317		
18	1st FLR. TRANSFORMER ROOM – SMOKE DETECT	5	118	APARTMENT 311 – SMOKE DETECTOR	3	218	APARTMENT 701 – SMOKE DETECTOR	3	318		
19	1st FLR. TRANSFORMER ROOM – PULL STATION	7	119	3rd FLR. MECH. RM #12 – SMOKE DETECTOR	5	219	7th FLR. MECH. RM #2 – SMOKE DETECTOR	5	319		
20	1st FLR. LAUNDRY ROOM – 135° HEAT DETECTOR	6	120	APARTMENT 312 – SMOKE DETECTOR	3	220	APARTMENT 702 – SMOKE DETECTOR	3	320		
21	1st FLR. LAUNDRY ROOM – 200° HEAT DETECTOR	6	121	3rd FLR. MECH. RM #13 – SMOKE DETECTOR	5	221	7th FLR. MECH. RM #3 – SMOKE DETECTOR	5	321		
22	1st FLR. LAUNDRY ROOM – 200° HEAT DETECTOR	6	122	APARTMENT 313 – SMOKE DETECTOR	3	222	APARTMENT 703 – SMOKE DETECTOR	3	322		
23	1st FLR. MECHANICAL CHASE – SMOKE DETECTOR	5	123	3rd FLR. ELECTRICAL ROOM – SMOKE DETECTOR	5	223	7th FLR. MECH. RM #4 – SMOKE DETECTOR	5	323		
24	1st FLR. RESTROOM – 135° HEAT DETECTOR	6	124	3rd FLOOR WEST CORRIDOR – PULL STATION	7	224	APARTMENT 704 – SMOKE DETECTOR	3	324		
25	1st FLR. MECH. RM #1 – SMOKE DETECTOR	5	125	3rd FLOOR EAST CORRIDOR – PULL STATION	7	225	7th FLR. MECH. RM #5 – SMOKE DETECTOR	5	325		
26	APARTMENT 101 – SMOKE DETECTOR	3	126	4th FLR. ELEVATOR LOBBY – SMOKE DETECTOR	5	226	APARTMENT 705 – SMOKE DETECTOR	3	326		
27	1st FLR. MECH. RM #12 – SMOKE DETECTOR	5	127	4th FLR. MECH. RM #1 – SMOKE DETECTOR	5	227	7th FLR. MECH. RM #6 – SMOKE DETECTOR	5	327		
28	APARTMENT 112 – SMOKE DETECTOR	3	128	APARTMENT 401 – SMOKE DETECTOR	3	228	APARTMENT 706 – SMOKE DETECTOR	3	328		
29	1st FLR. MECH. RM #13 – SMOKE DETECTOR	5	129	4th FLR. MECH. RM #2 – SMOKE DETECTOR	5	229	7th FLR. MECH. RM #7 – SMOKE DETECTOR	5	329		
30	APARTMENT 113 – SMOKE DETECTOR	3	130	APARTMENT 402 – SMOKE DETECTOR	3	230	APARTMENT 707 – SMOKE DETECTOR	3	330		
31	1st FLR. ELECTRICAL ROOM – SMOKE DETECTOR	5	131	4th FLR. MECH. RM #3 – SMOKE DETECTOR	5	231	7th FLR. MECH. RM #8 – SMOKE DETECTOR	5	331		
32	ROOM 110 SPRINKLER RISER – FLOW SWITCH	8	132	APARTMENT 403 – SMOKE DETECTOR	3	232	APARTMENT 708 – SMOKE DETECTOR	3	332		
33	ROOM 110 SPRINKLER RISER – TAMPER SWITCH	9	133	4th FLR. MECH. RM #4 – SMOKE DETECTOR	5	233	7th FLR. MECH. RM #9 – SMOKE DETECTOR	5	333		
34	1st FLOOR WEST CORRIDOR – PULL STATION	7	134	APARTMENT 404 – SMOKE DETECTOR	3	234	APARTMENT 709 – SMOKE DETECTOR	3	334		
35	1st FLOOR CENTRAL CORRIDOR – PULL STATION	7	135	4th FLR. MECH. RM #5 – SMOKE DETECTOR	5	235	7th FLR. MECH. RM #10 – SMOKE DETECTOR	5	335		
36	1st FLR. ELEVATOR LOBBY – SMOKE DETECTOR	5	136	APARTMENT 405 – SMOKE DETECTOR	3	236	APARTMENT 710 – SMOKE DETECTOR	3	336		
37	ELEVATOR HOSTWAY PIT – SMOKE DETECTOR	5	137	4th FLR. MECH. RM #6 – SMOKE DETECTOR	5	237	7th FLR. MECH. RM #11 – SMOKE DETECTOR	5	337		
38	2nd FLR. MECH. RM #1 – SMOKE DETECTOR	5	138	APARTMENT 406 – SMOKE DETECTOR	3	238	APARTMENT 711 – SMOKE DETECTOR	3	338		
39	APARTMENT 201 – SMOKE DETECTOR	3	139	4th FLR. MECH. RM #7 – SMOKE DETECTOR	5	239	7th FLR. MECH. RM #12 – SMOKE DETECTOR	5	339		
40	2nd FLR. MECH. RM #2 – SMOKE DETECTOR	5	140	APARTMENT 407 – SMOKE DETECTOR	3	240	APARTMENT 712 – SMOKE DETECTOR	3	340		
41	APARTMENT 202 – SMOKE DETECTOR	3	141	4th FLR. MECH. RM #8 – SMOKE DETECTOR	5	241	7th FLR. MECH. RM #13 – SMOKE DETECTOR	5	341		
42	2nd FLR. MECH. RM #3 – SMOKE DETECTOR	5	142	APARTMENT 408 – SMOKE DETECTOR	3	242	APARTMENT 713 – SMOKE DETECTOR	3	342		
43	APARTMENT 203 – SMOKE DETECTOR	3	143	4th FLR. MECH. RM #9 – SMOKE DETECTOR	5	243	7th FLR. ELECTRICAL ROOM – SMOKE DETECTOR	5	343		
44	2nd FLR. MECH. RM #4 – SMOKE DETECTOR	5	144	APARTMENT 409 – SMOKE DETECTOR	3	244	7th FLOOR WEST CORRIDOR – PULL STATION	7	344		
45	APARTMENT 204 – SMOKE DETECTOR	3	145	4th FLR. MECH. RM #10 – SMOKE DETECTOR	5	245	7th FLOOR EAST CORRIDOR – PULL STATION	7	345		
46	2nd FLR. MECH. RM #5 – SMOKE DETECTOR	5	146	APARTMENT 410 – SMOKE DETECTOR	3	246	7th FLR. ELEVATOR LOBBY – SMOKE DETECTOR	5	346		
47	APARTMENT 205 – SMOKE DETECTOR	3	147	4th FLR. MECH. RM #11 – SMOKE DETECTOR	5	247	8th FLR. MECH. RM #1 – SMOKE DETECTOR	5	347		
48	2nd FLR. MECH. RM #6 – SMOKE DETECTOR	5	148	APARTMENT 411 – SMOKE DETECTOR	3	248	APARTMENT 801 – SMOKE DETECTOR	3	348		
49	2nd FLR. DAY CARE AHU – DUCT DETECTOR	4	149	4th FLR. MECH. RM #12 – SMOKE DETECTOR	5	249	8th FLR. MECH. RM #2 – SMOKE DETECTOR	5	349		
50	2nd FLR. DAY CARE AHU – DUCT DETECTOR	4	150	APARTMENT 412 – SMOKE DETECTOR	3	250	APARTMENT 802 – SMOKE DETECTOR	3	350		
51	2nd FLR. DAY CARE AHU – DUCT DETECTOR	4	151	4th FLR. MECH. RM #13 – SMOKE DETECTOR	5	251	8th FLR. MECH. RM #3 – SMOKE DETECTOR	5	351		
52	2nd FLR. DAY CARE KITCHEN – HEAT DETECT.	6	152	APARTMENT 413 – SMOKE DETECTOR	3	252	APARTMENT 803 – SMOKE DETECTOR	3	352		
53	2nd FLR. DAY CARE STORAGE – SMOKE DETECT.	5	153	4th FLR. ELECTRICAL ROOM – SMOKE DETECTOR	5	253	8th FLR. MECH. RM #4 – SMOKE DETECTOR	5	353		
54	2nd FLR. DAY CARE RESTROOM – SMOKE DETECT	5	154	4th FLOOR WEST CORRIDOR – PULL STATION	7	254	APARTMENT 804 – SMOKE DETECTOR	3	354		
55	2nd FLR. DAY CARE RESTROOM – SMOKE DETECT	5	155	4th FLOOR EAST CORRIDOR – PULL STATION	7	255	8th FLR. MECH. RM #5 – SMOKE DETECTOR	5	355		
56	2nd FLR. DAY CARE – SMOKE DETECTOR	5	156	4th FLR. ELEVATOR LOBBY – SMOKE DETECTOR	5	256	APARTMENT 805 – SMOKE DETECTOR	3	356		
57	2nd FLR. DAY CARE – SMOKE DETECTOR	5	157	5th FLR. MECH. RM #1 – SMOKE DETECTOR	5	257	8th FLR. MECH. RM #6 – SMOKE DETECTOR	5	357		
58	2nd FLR. DAY CARE – SMOKE DETECTOR	5	158	APARTMENT 501 – SMOKE DETECTOR	3	258	APARTMENT 806 – SMOKE DETECTOR	3	358		
59	2nd FLR. DAY CARE – SMOKE DETECTOR	5	159	5th FLR. MECH. RM #2 – SMOKE DETECTOR	5	259	8th FLR. MECH. RM #7 – SMOKE DETECTOR	5	359		
60	2nd FLR. DAY CARE – SMOKE DETECTOR	5	160	APARTMENT 502 – SMOKE DETECTOR	3	260	APARTMENT 807 – SMOKE DETECTOR	3	360		
61	2nd FLR. DAY CARE – SMOKE DETECTOR	5	161	5th FLR. MECH. RM #3 – SMOKE DETECTOR	5	261	8th FLR. MECH. RM #8 – SMOKE DETECTOR	5	361		
62	2nd FLR. DAY CARE – PULL STATION	7	162	APARTMENT 503 – SMOKE DETECTOR	3	262	APARTMENT 808 – SMOKE DETECTOR	3	362		
63	2nd FLR. MECH. RM #7 – SMOKE DETECTOR	5	163	5th FLR. MECH. RM #4 – SMOKE DETECTOR	5	263	8th FLR. MECH. RM #9 – SMOKE DETECTOR	5	363		
64	2nd FLR. NURSERY OFFICE – SMOKE DETECTOR	5	164	APARTMENT 504 – SMOKE DETECTOR	3	264	APARTMENT 809 – SMOKE DETECTOR	3	364		
65	2nd FLR. NURSERY RESTROOM – SMOKE DETECT	5	165	5th FLR. MECH. RM #5 – SMOKE DETECTOR	5	265	8th FLR. MECH. RM #10 – SMOKE DETECTOR	5	365		
66	2nd FLR. MECH. RM #8 – SMOKE DETECTOR	5	166	APARTMENT 505 – SMOKE DETECTOR	3	266	APARTMENT 810 – SMOKE DETECTOR	3	366		
67	2nd FLR. MECH. RM #8 AHU – DUCT DETECTOR	4	167	5th FLR. MECH. RM #6 – SMOKE DETECTOR	5	267	8th FLR. MECH. RM #11 – SMOKE DETECTOR	5	367		
68	2nd FLR. NURSERY KITCHEN – HEAT DETECTOR	6	168	APARTMENT 506 – SMOKE DETECTOR	3	268	APARTMENT 811 – SMOKE DETECTOR	3	368		
69	2nd FLR. NURSERY – SMOKE DETECTOR	5	169	5th FLR. MECH. RM #7 – SMOKE DETECTOR	5	269	8th FLR. MECH. RM #12 – SMOKE DETECTOR	5	369		
70	2nd FLR. NURSERY – PULL STATION	7	170	APARTMENT 507 – SMOKE DETECTOR	3	270	APARTMENT 812 – SMOKE DETECTOR	3	370		
71	2nd FLR. MECH. RM #9 – SMOKE DETECTOR	5	171	5th FLR. MECH. RM #8 – SMOKE DETECTOR	5	271	8th FLR. MECH. RM #13 – SMOKE DETECTOR	5	371		
72	APARTMENT 209 – SMOKE DETECTOR	3	172	APARTMENT 508 – SMOKE DETECTOR	3	272	APARTMENT 813 – SMOKE DETECTOR	3	372		
73	2nd FLR. MECH. RM #10 – SMOKE DETECTOR	5	173	5th FLR. MECH. RM #9 – SMOKE DETECTOR	5	273	8th FLR. ELECTRICAL ROOM – SMOKE DETECTOR	5	373		
74	APARTMENT 210 – SMOKE DETECTOR	3	174	APARTMENT 509 – SMOKE DETECTOR	3	274	8th FLOOR WEST CORRIDOR – PULL STATION	7	374		
75	2nd FLR. MECH. RM #11 – SMOKE DETECTOR	5	175	5th FLR. MECH. RM #10 – SMOKE DETECTOR	5	275	8th FLOOR EAST CORRIDOR – PULL STATION	7	375		
76	APARTMENT 211 – SMOKE DETECTOR	3	176	APARTMENT 510 – SMOKE DETECTOR	3	276	8th FLR. ELEVATOR LOBBY – SMOKE DETECTOR	5	376		
77	2nd FLR. MECH. RM #12 – SMOKE DETECTOR	5	177	5th FLR. MECH. RM #11 – SMOKE DETECTOR	5	277	9th FLR. MECH. RM #1 – SMOKE DETECTOR	5	377		
78	APARTMENT 212 – SMOKE DETECTOR	3	178	APARTMENT 511 – SMOKE DETECTOR	3	278	APARTMENT 901 – SMOKE DETECTOR	3	378		
79	2nd FLR. MECH. RM #13 – SMOKE DETECTOR	5	179	5th FLR. MECH. RM #12 – SMOKE DETECTOR	5	279	9th FLR. MECH. RM #2 – SMOKE DETECTOR	5	379		
80	APARTMENT 213 – SMOKE DETECTOR	3	180	APARTMENT 512 – SMOKE DETECTOR	3	280	APARTMENT 902 – SMOKE DETECTOR	3	380		
81	2nd FLR. ELECTRICAL ROOM – SMOKE DETECTOR	5	181	5th FLR. MECH. RM #13 – SMOKE DETECTOR	5	281	9th FLR. MECH. RM #3 – SMOKE DETECTOR	5	381		
82	2nd FLOOR WEST CORRIDOR – PULL STATION	7	182	APARTMENT 513 – SMOKE DETECTOR	3	282	APARTMENT 903 – SMOKE DETECTOR	3	382		
83	2nd FLOOR CENTRAL CORRIDOR – PULL STATION	7	183	5th FLR. ELECTRICAL ROOM – SMOKE DETECTOR	5	283	9th FLR. MECH. RM #4 – SMOKE DETECTOR	5	383		
84	2nd FLOOR EAST CORRIDOR – PULL STATION	7	184	5th FLOOR WEST CORRIDOR – PULL STATION	7	284	APARTMENT 904 – SMOKE DETECTOR	3	384		
85	2nd FLR. WEST CORRIDOR – SMOKE DETECTOR	5	185	5th FLOOR EAST CORRIDOR – PULL STATION	7	285	9th FLR. MECH. RM #5 – SMOKE DETECTOR	5	385		
86	2nd FLR. WEST CORRIDOR – SMOKE DETECTOR	5	186	5th FLR. ELEVATOR LOBBY – SMOKE DETECTOR	5	286	APARTMENT 905 – SMOKE DETECTOR	3	386		
87	2nd FLR. WEST CORRIDOR – SMOKE DETECTOR	5	187	6th FLR. MECH. RM #1 – SMOKE DETECTOR	5	287	9th FLR. MECH. RM #6 – SMOKE DETECTOR	5	387		
88	2nd FLR. CENTRAL CORRIDOR – SMOKE DETECTOR	5	188	APARTMENT 601 – SMOKE DETECTOR	3	288	APARTMENT 906 – SMOKE DETECTOR	3	388		
89	2nd FLR. CENTRAL CORRIDOR – SMOKE DETECTOR	5	189	6th FLR. MECH. RM #2 – SMOKE DETECTOR	5	289	9th FLR. MECH. RM #7 – SMOKE DETECTOR	5	389		
90	2nd FLR. EAST CORRIDOR – SMOKE DETECTOR	5	190	APARTMENT 602 – SMOKE DETECTOR	3	290	APARTMENT 907 – SMOKE DETECTOR	3	390		
91	2nd FLR. EAST CORRIDOR – SMOKE DETECTOR	5	191	6th FLR. MECH. RM #3 – SMOKE DETECTOR	5	291	9th FLR. MECH. RM #8 – SMOKE DETECTOR	5	391		
92	2nd FLR. EAST CORRIDOR – SMOKE DETECTOR	5	192	APARTMENT 603 – SMOKE DETECTOR	3	292	APARTMENT 908 – SMOKE DETECTOR	3	392		
93	2nd FLR. EAST CORRIDOR – SMOKE DETECTOR	5	193	6th FLR. MECH. RM #4 – SMOKE DETECTOR	5	293	9th FLR. MECH. RM #9 – SMOKE DETECTOR	5	393		
94	2nd FLR. WEST STAIRWELL – SMOKE DETECTOR	5	194	APARTMENT 604 – SMOKE DETECTOR	3	294	APARTMENT 909 – SMOKE DETECTOR	3	394		
95	2nd FLR. EAST STAIRWELL – SMOKE DETECTOR	5	195	6th FLR. MECH. RM #5 – SMOKE DETECTOR	5	295	9th FLR. MECH. RM #10 – SMOKE DETECTOR	5	395		
96	2nd FLR. ELEVATOR LOBBY – SMOKE DETECTOR	5	196	APARTMENT 605 – SMOKE DETECTOR	3	296	APARTMENT 910 – SMOKE DETECTOR	3	396		
97	3rd FLR. MECH. RM #1 – SMOKE DETECTOR	5	197	6th FLR. MECH. RM #6 – SMOKE DETECTOR	5	297	9th FLR. MECH. RM #11 – SMOKE DETECTOR	5	397		
98	APARTMENT 301 – SMOKE DETECTOR	3	198	APARTMENT 606 – SMOKE DETECTOR	3	298	APARTMENT 911 – SMOKE DETECTOR	3	398		
99	3rd FLR. MECH. RM #2 – SMOKE DETECTOR	5	199	6th FLR. MECH. RM #7 – SMOKE DETECTOR	5	299	9th FLR. MECH. RM #12 – SMOKE DETECTOR	5	399		
10											



RISER NOTES

11. PANEL "E" IS AN EXISTING WESTINGHOUSE TYPE WEB PANELBOARD. PROVIDE A NEW 100 AMP 240/120V 3-PHASE 4-WIRE SERVICE PANEL WITH 100 AMP MAIN SUPPLEMENTARY PROTECTED BREAKERS, 100 AMP MAIN DISCONNECT, 100 AMP SUPPLEMENTARY PROTECTED BREAKERS, 100 AMP MAIN DISCONNECT, AND 100 AMP SUPPLEMENTARY PROTECTED BREAKERS. UPDATE THE EXISTING PANELBOARD SCHEDULE TO REFLECT NEW AND REMOVED LOADS.

16	SPARE		
----	-------	--	--

- 5 TO ALL ROOF/PENTHOUSE ALARM UNITS
- 5 TO ALL ROOF/PENTHOUSE MANUAL AND AUTOMATIC ADDRESSABLE DETECTION DEVICES
- 5 TO ALL ROOF/PENTHOUSE FIREFIGHTERS' TELEPHONE SYSTEM JACKS

- 5 TO ALL NINTH FLOOR ALARM UNITS
- 5 TO ALL NINTH FLOOR MANUAL AND AUTOMATIC ADDRESSABLE DETECTION DEVICES
- 5 TO ALL NINTH FLOOR FIREFIGHTERS' TELEPHONE SYSTEM JACKS

5 TO ALL EIGHTH FLOOR ALARM UNITS

5 TO ALL EIGHTH FLOOR MANUAL AND AUTOMATIC ADDRESSABLE DETECTION DEVICES

5 TO ALL EIGHTH FLOOR FIREFIGHTERS' TELEPHONE SYSTEM JACKS

- 5 TO ALL SEVENTH FLOOR ALARM UNITS
- 5 TO ALL SEVENTH FLOOR MANUAL AND AUTOMATIC ADDRESSABLE DETECTION DEVICES
- 5 TO ALL SEVENTH FLOOR FIREFIGHTERS' TELEPHONE SYSTEM JACKS

- 5 TO ALL SIXTH FLOOR ALARM UNITS
- 5 TO ALL SIXTH FLOOR MANUAL AND AUTOMATIC ADDRESSABLE DETECTION DEVICES
- 5 TO ALL SIXTH FLOOR FIREFIGHTERS' TELEPHONE SYSTEM JACKS

- 5 TO ALL FIFTH FLOOR ALARM UNITS
- 5 TO ALL FIFTH FLOOR MANUAL AND AUTOMATIC ADDRESSABLE DETECTION DEVICES
- 5 TO ALL FIFTH FLOOR FIREFIGHTERS' TELEPHONE SYSTEM JACKS

- 5 TO ALL FOUR FLOOR ALARM UNITS
- 5 TO ALL FOUR FLOOR MANUAL AND AUTOMATIC ADDRESSABLE DETECTION DEVICES
- 5 TO ALL FOUR FLOOR FIREFIGHTERS' TELEPHONE SYSTEM JACKS

- 5 TO ALL THIRD FLOOR ALARM UNITS
- 5 TO ALL THIRD FLOOR MANUAL AND AUTOMATIC ADDRESSABLE DETECTION DEVICES
- 5 TO ALL THIRD FLOOR FIREFIGHTERS' TELEPHONE SYSTEM JACKS

## GENERAL NOTES

- OUTAGES TO ELECTRICAL SERVICE SHALL NOT EXCEED 4 HOURS.

## DEMOLITION NOTES

- TURNED OVER TO RANDY STARNES OF USC'S HEALTH & SAFETY DEPARTMENT.

23	EXTERIOR AUDIO/VISUAL ALARM UNIT (EXISTING)
----	---

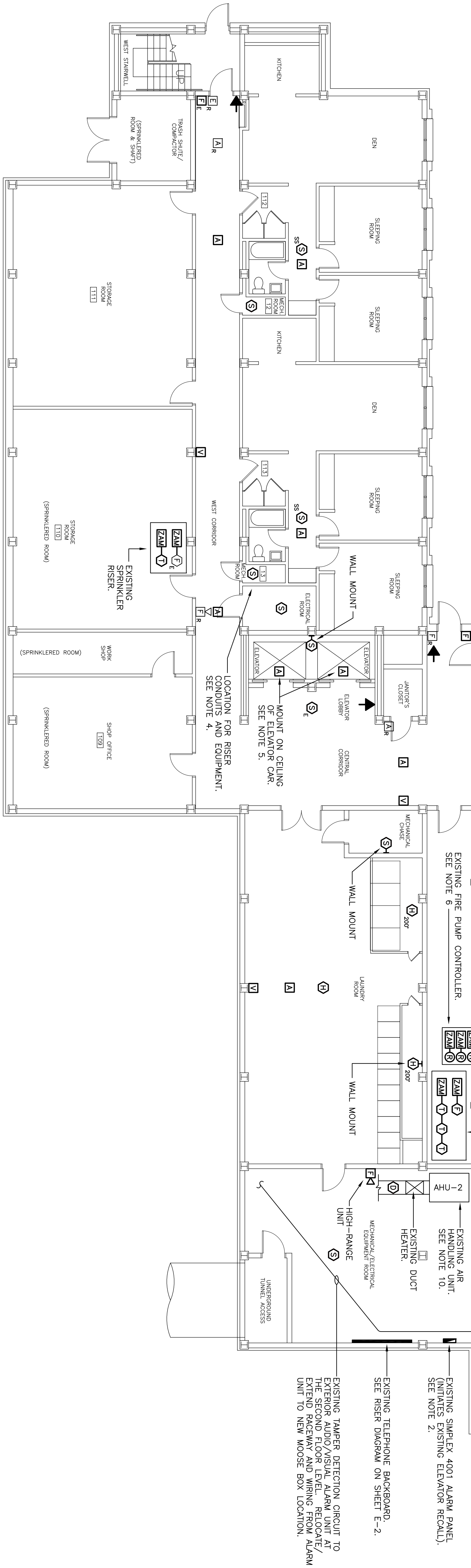
NOT TO SCALE

E-2	OF 7
IN SET:	



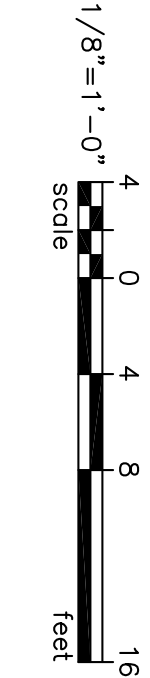
NOTES

1. REMOVE THE EXISTING MAIN FIRE ALARM CONTROL PANEL AND GEMWELL BOX. THE BRANCH CIRCUIT WHICH SERVES THE MAIN CONTROL PANEL ORIGINATES FROM EMERGENCY PANELBOARD "E". SEE DEMOLITION NOTE #1 ON SHEET E-2.
  2. REMOVE THE EXISTING SIMPLEX 4001 FIRE ALARM CONTROL PANEL THAT PROVIDES FREIGHTERS' SERVICE FOR THE EXISTING ELEVATORS. SEE DEMOLITION NOTE #4 ON SHEET E-2.
  3. REMOVE THE EXISTING CENTRAL STATION PANEL (MOOSE BOX) AND TURN OVER TO ERNIE ELLIS OF USC'S LAW ENFORCEMENT DIVISION. PHONE NUMBER 777-8400.
  4. EQUIPMENT, RISER RACEWAYS, AND RISER WIRING SERVING FIRST FLOOR DETECTION, ALARM, AND COMMUNICATIONS DEVICES SHALL BE LOCATED IN THE ELECTRICAL ROOM INDICATED.
  5. CONTRACTOR MAY UTILIZE SPARE CAR CONDUCTORS FOR ELEVATOR PAGING/ALARM CIRCUITS IF AVAILABLE. EXISTING CONDUCTORS WHICH SERVE ELEVATOR CARS ORIGINATE FROM THE ELEVATOR MACHINE ROOM ON THE ROOF. COORDINATE ALL ELEVATOR WORK WITH RON GENTRY OF USC'S MAINTENANCE DEPARTMENT AT 777-4217.
  6. PROVIDE ALL EQUIPMENT, CONTROL DEVICES, AND CONTROL WIRING NECESSARY TO COMMAND CENTER AS REQUIRED PER NFPA 20.
  7. THE EXISTING SPRINKLER RISER DOES NOT HAVE PROVISIONS FOR A FLOW SWITCH. PROVIDE SPRINKLER SYSTEM FLOW SWITCH AS INDICATED. BORE EXISTING PIPING AS REQUIRED TO INSTALL SWITCH. CONTRACTOR SHALL VERIFY EXISTING CONDITIONS AND PIPE DIAMETER. SPRINKLER SYSTEM MODIFICATIONS SHALL CONFORM TO NFPA 13.
  8. THE EXISTING POST INDICATING VALVE DOES NOT HAVE PROVISIONS FOR A TAMPER SWITCH. BORE AND TAP VALVE HOUSING AS REQUIRED TO PROPERLY INSTALL SWITCH. CONDUIT FOR UNDERGROUND SWITCH WIRING SHALL BE GALVANIZED RIGID STEEL AND SHALL BE INSTALLED 30" BELOW FINISHED GRADE. BUILDING PENETRATION OF THE CONDUIT SHALL BE MADE AT 1'-0" ABOVE FINISHED GRADE. THE CONDUIT SHALL BE INSTALLED WITH THE CORRECT SLOPE AND SHALL BE INSTALLED WITH THE CORRECT FITTING. CONTRACTOR SHALL VERIFY EXISTING CONDITIONS AND DIMENSIONS.
  9. AHU-1: INSTALL THE SMOKE DAMPER AND DUCT SMOKE DETECTORS IN ACCORDANCE WITH NFPA 90A. PROVIDE ALL PROGRAMMING, CONTROL EQUIPMENT, DEVICES, AND WIRING REQUIRED TO ACCOMPLISH THE FOLLOWING UPON DETECTION OF SMOKE:
    - A) SHUTDOWN THE AIR HANDLING UNIT FAN.
    - B) CLOSE THE SMOKE DAMPER. THE SMOKE DAMPER SHALL ALSO CLOSE WHEN THE HANDLING UNIT IS NOT IN OPERATION.
    - C) CLOSE OUTSIDE-AIR LOUVERS.NOTE: PROVIDE A 16" x 12" (MINIMUM) ACCESS DOOR ADJACENT TO THE SMOKE DAMPER. INSTALL ACCESS DOOR IN ACCORDANCE WITH SMACNA "HAC DUCT CONSTRUCTION STANDARD."
- NOTE: PROVIDE A SWITCH AT THE CENTRAL CONTROL STATION TO MANUALLY SHUTDOWN AHU-1.
10. AHU-2: INSTALL DUCT SMOKE DETECTOR IN ACCORDANCE WITH NFPA 90A. PROVIDE ALL PROGRAMMING, CONTROL EQUIPMENT, DEVICES, AND WIRING REQUIRED TO ACCOMPLISH THE FOLLOWING UPON DETECTION OF SMOKE:
    - A) SHUTDOWN THE AIR HANDLING UNIT FAN.
    - B) DISCONNECT POWER TO THE DUCT HEATER.NOTE: PROVIDE A SWITCH AT THE CENTRAL CONTROL STATION TO MANUALLY SHUTDOWN AHU-2.



FIRST FLOOR PLAN

SCALE: 1/8"=1'-0"



DRAWING INCLUDED FOR  
REFERENCE ONLY

DESIGN AND ENGINEERING  
PROJECT DEVELOPMENT OFFICE  
743 GREENE STREET  
COLUMBIA, SOUTH CAROLINA 29208

PROJECT TITLE: INSTALL FIRE ALARM SYSTEM  
CLIFF APARTMENTS



The University of South Carolina  
Aiken, Allendale, Beaufort, Columbia, Conway, Lancaster, Salkehatchie,  
Spartanburg, Sumter, Union and the Military Campus



BUILDING: 165		DRAWING:	DATE: 01JAN94	DRAWN BY: JWL	CHECKED BY: KLB	
REV.	DESCRIPTION			DATE	ORIG. BY	DRAWN BY

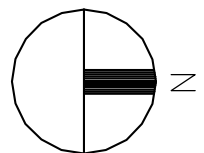
SHEET: E-3  
OF 7  
SHEET IN SET: 7 OF 11





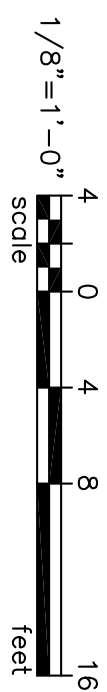
## NOTES

1. EQUIPMENT, RISER RACEWAYS, AND RISER WIRING SERVING THIRD FLOOR DETECTION, ALARM, AND COMMUNICATIONS DEVICES SHALL BE LOCATED IN THE ELECTRICAL ROOM INDICATED.



### THIRD FLOOR PLAN

SCALE: 1/8"=1'-0"



DRAWING INCLUDED FOR  
REFERENCE ONLY

BUILDING:	165	DRAWING:		DATE:	01JAN94	DRAWN BY:	JWL	CHECKED BY:	KLB	SEAL:	
REV.	DESCRIPTION					DATE	ORIG. BY	DRAWN BY			

DESIGN AND ENGINEERING  
PROJECT DEVELOPMENT OFFICE  
743 GREENE STREET  
COLUMBIA, SOUTH CAROLINA 29208

PROJECT TITLE: **INSTALL FIRE ALARM SYSTEM**  
**CLIFF APARTMENTS**

 The University of South Carolina  
Aiken, Allendale, Beaufort, Columbia, Conway, Lancaster, Salkehatchie,  
Spartanburg, Sumter, Union and the Military Campus

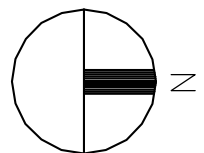




NOTES

1. EQUIPMENT, RISER RACEWAYS, AND RISER WIRING SERVING FOURTH FLOOR DETECTION, ALARM, AND COMMUNICATIONS DEVICES SHALL BE LOCATED IN THE MECHANICAL ROOM INDICATED TYPICAL FOR THE 5th, 6th, 7th, 8th, AND 9th FLOORS).

1. EQUIPMENT, RISER RACEWAYS, AND RISER WIRING SERVING FOURTH FLOOR DETECTION, ALARM, AND COMMUNICATIONS DEVICES SHALL BE LOCATED IN THE ELECTRICAL ROOM INDICATED (TYPICAL FOR THE 5th, 6th, 7th, 8th, AND 9th FLOORS).



SHEET: \_\_\_\_\_

E-6

OF 7

SHEET IN SET: \_\_\_\_\_

10 OF 11

743 GREENE STREET  
COLUMBIA, SOUTH CAROLINA 29208

50

The University of South Carolina

Aiken, Allendale, Beaufort, Columbia, Conway, Lancaster, Salkehatchie,  
Spartanburg, Sumter, Union and the Military Campus



--	--

---

---

---

--	--

--	--

--	--

--	--



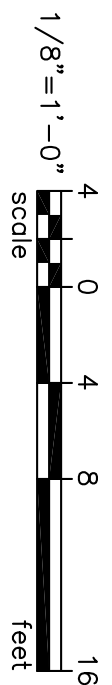
## NOTES

1. PROVIDE ALL EQUIPMENT, CONTROL DEVICES, AND CONTROL WIRING NECESSARY TO PROVIDE FIREFIGHTERS' SERVICE FOR BOTH ELEVATORS IN ACCORDANCE WITH ANS I 17.1. COORDINATE ALL ELEVATOR WORK WITH RON GENTRY OF USC'S MAINTENANCE DEPARTMENT AT 777-4217.



## ROOF/PENTHOUSE PLAN

SCALE: 1/8"=1'-0"



DRAWING INCLUDED FOR  
REFERENCE ONLY

[illegible]

SFAI :

DESIGN AND ENGINEERING  
PROJECT DEVELOPMENT OFFICE  
743 GREENE STREET  
COLUMBIA, SOUTH CAROLINA 29208

PROJECT TITLE:

# INSTALL FIRE ALARM SYSTEM CLIFF APARTMENTS



The University of South Carolina

Aiken, Allendale, Beaufort, Columbia, Conway, Lancaster, Salkehatchie,  
Spartanburg, Sumter, Union and the Military Campus



SHEET:

OF

11 OF 11